



# Cotton Brazil

growing for a better future

# quality report

Updated in 31<sup>st</sup> March, 2026







# HVI Labs in Brazil responsible for analysing 100% of Brazilian cotton production

classing labs

13

HVI machines

90

Central Quality Control Lab (CBRA)

1

## Mato Grosso

classing labs: 9  
HVI machines: 62

## Mato Grosso do Sul

classing labs: 1  
HVI machines: 4

## Goiás

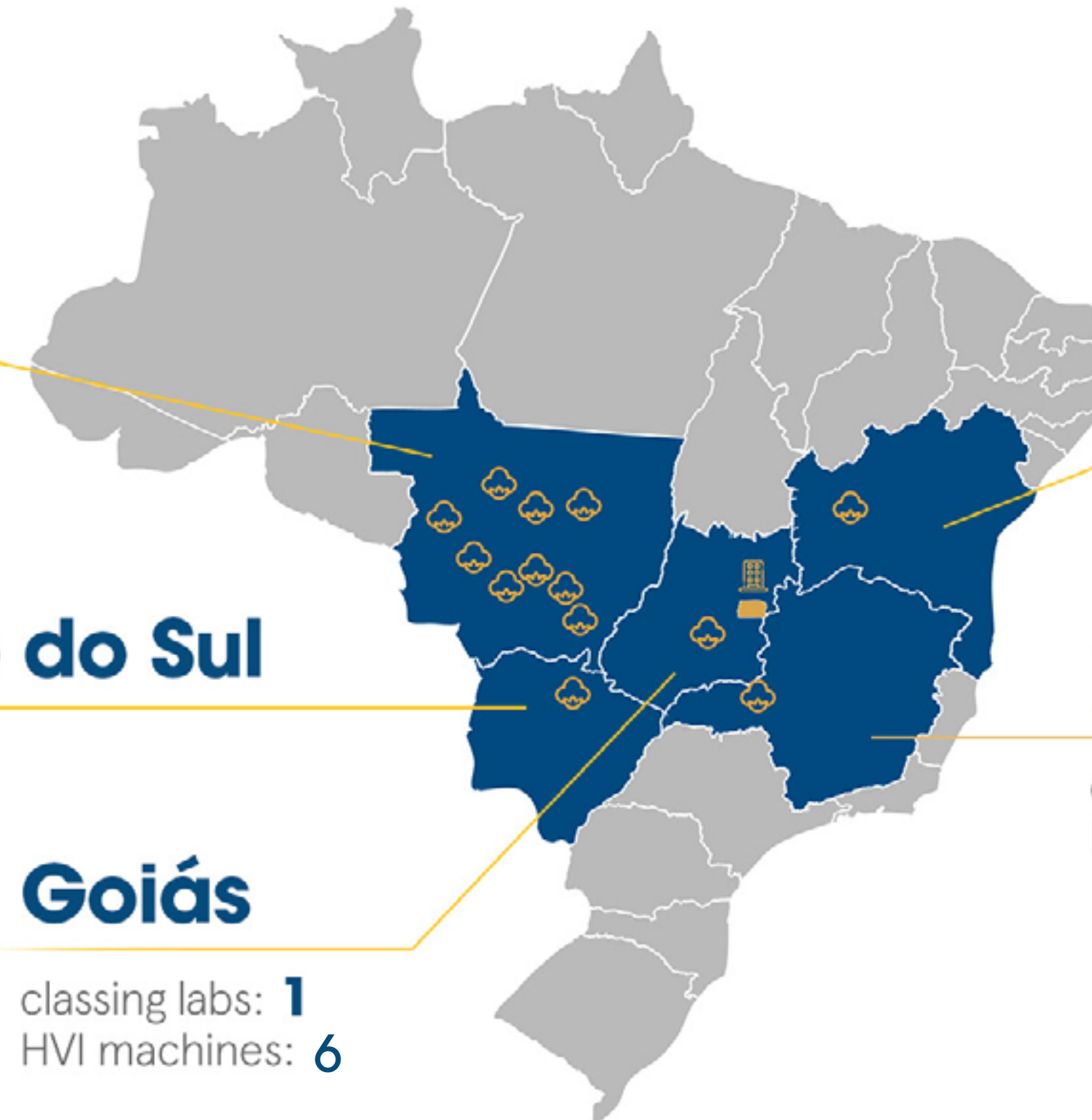
classing labs: 1  
HVI machines: 6

## Bahia

classing labs: 1  
HVI machines: 16

## Minas Gerais

classing labs: 1  
HVI machines: 2





# SBRHVI Program participant labs



Luís Eduardo Magalhães / BA



Goiânia / GO



Pedra Preta / MT



Sinop / MT



Chapadão do Sul / MS



Campo Verde / MT



Uberlândia / MG



Primavera do Leste / MT

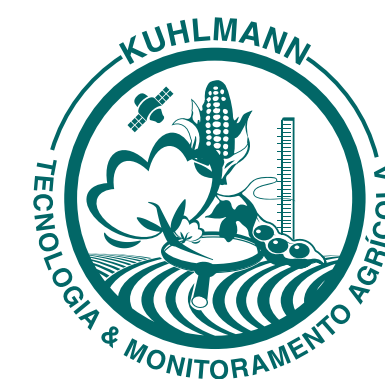


Empresa do Grupo  
Bureau Veritas



BUREAU  
VERITAS

Lucas do Rio Verde, Sapezal, Rondonópolis,  
Campo Novo do Parecis / MT



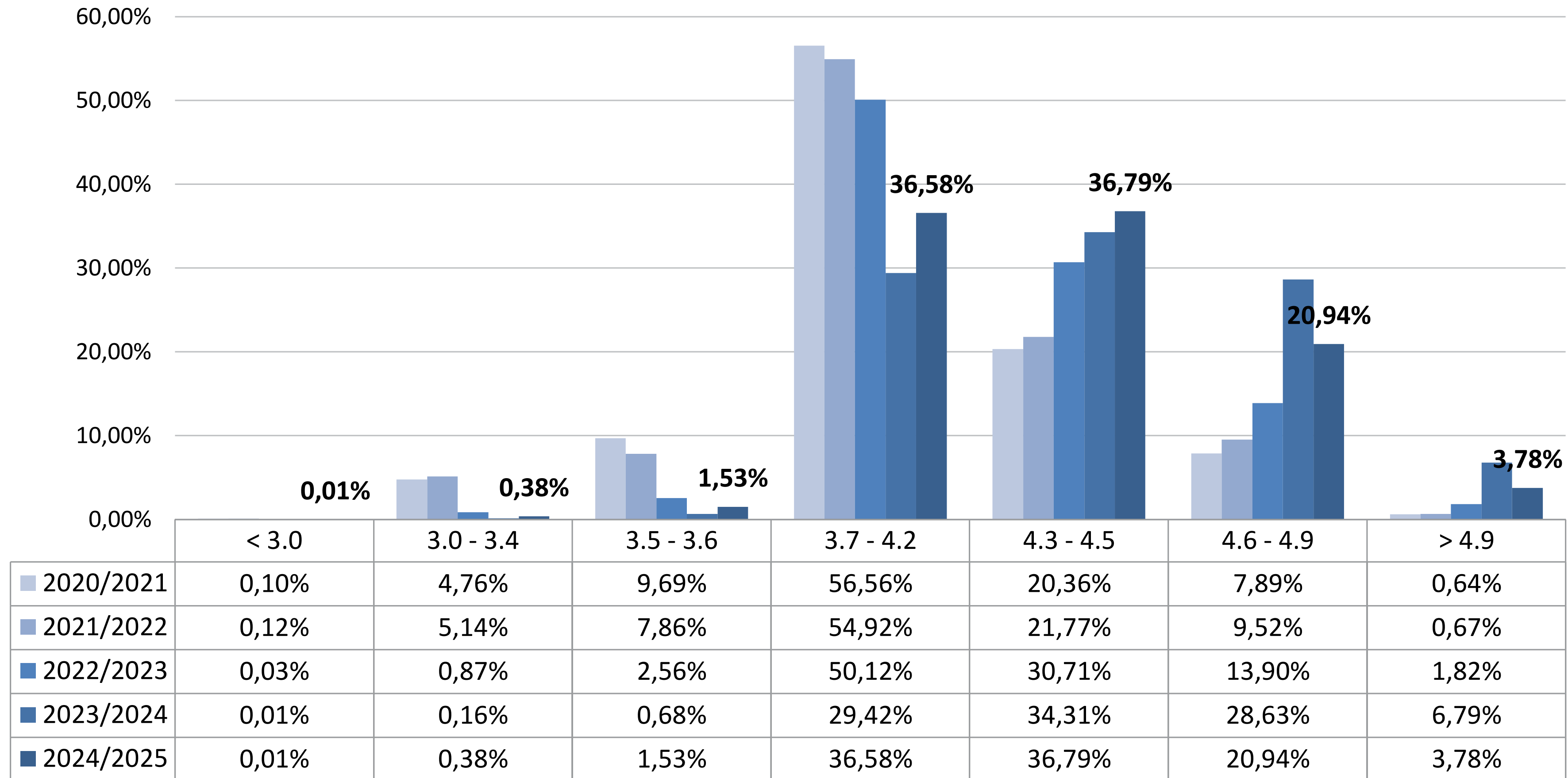
Empresa do Grupo  
Bureau Veritas



BUREAU  
VERITAS

Sorriso / MT

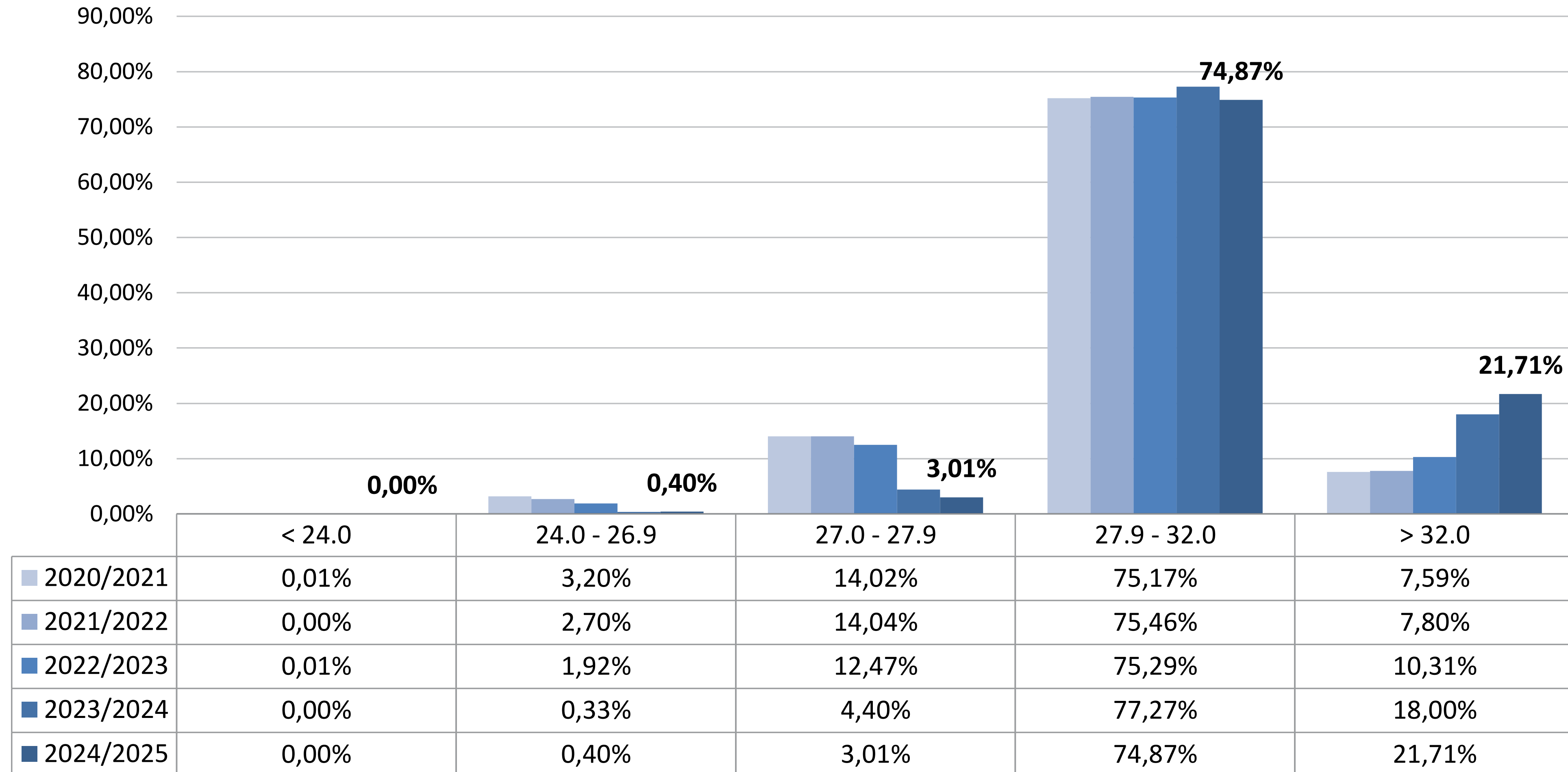






# strength - STR (gf/tex)

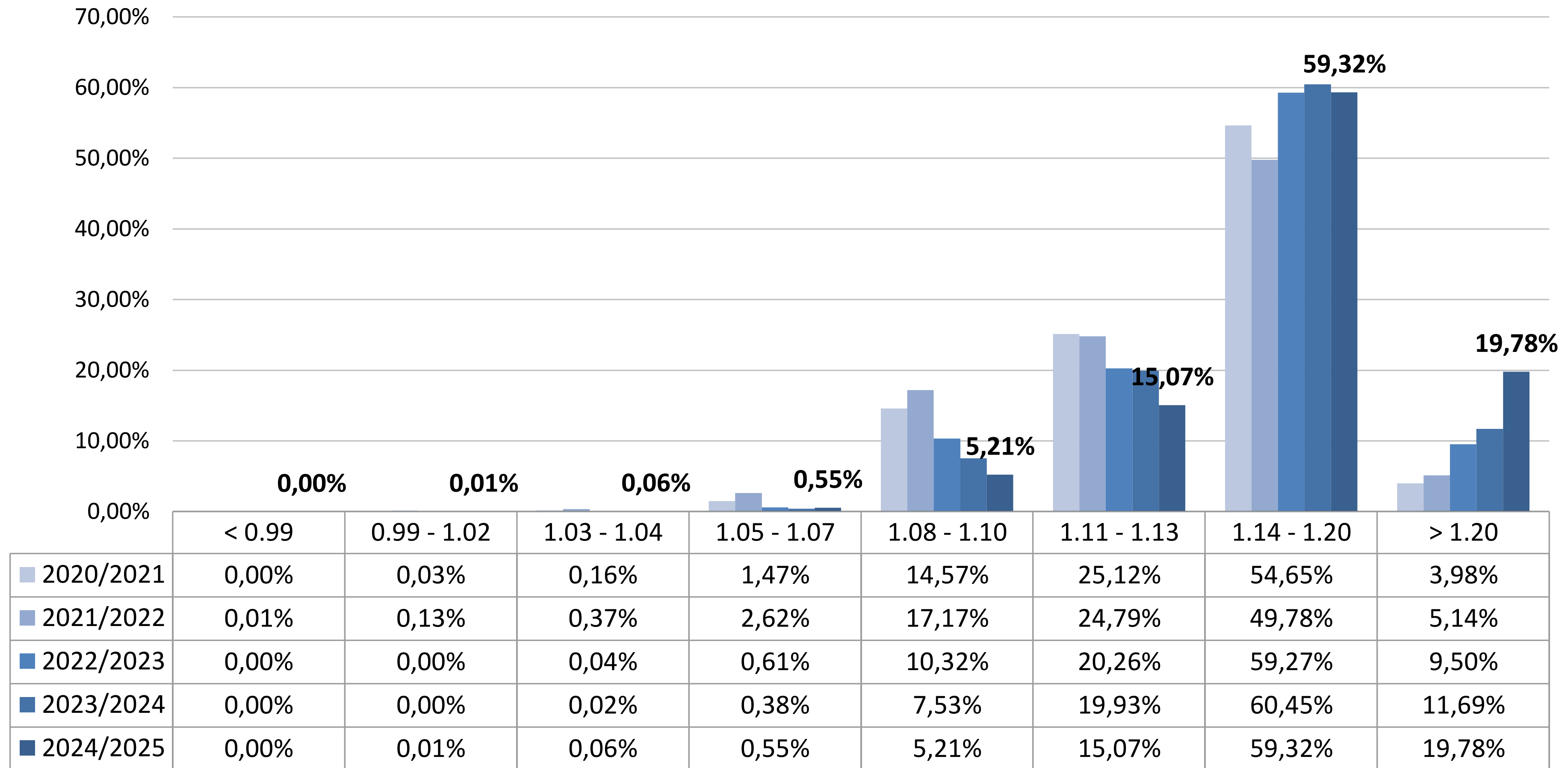
source: Brazilian HVI Laboratories, March 2026





# fiber length - UHML (inches)

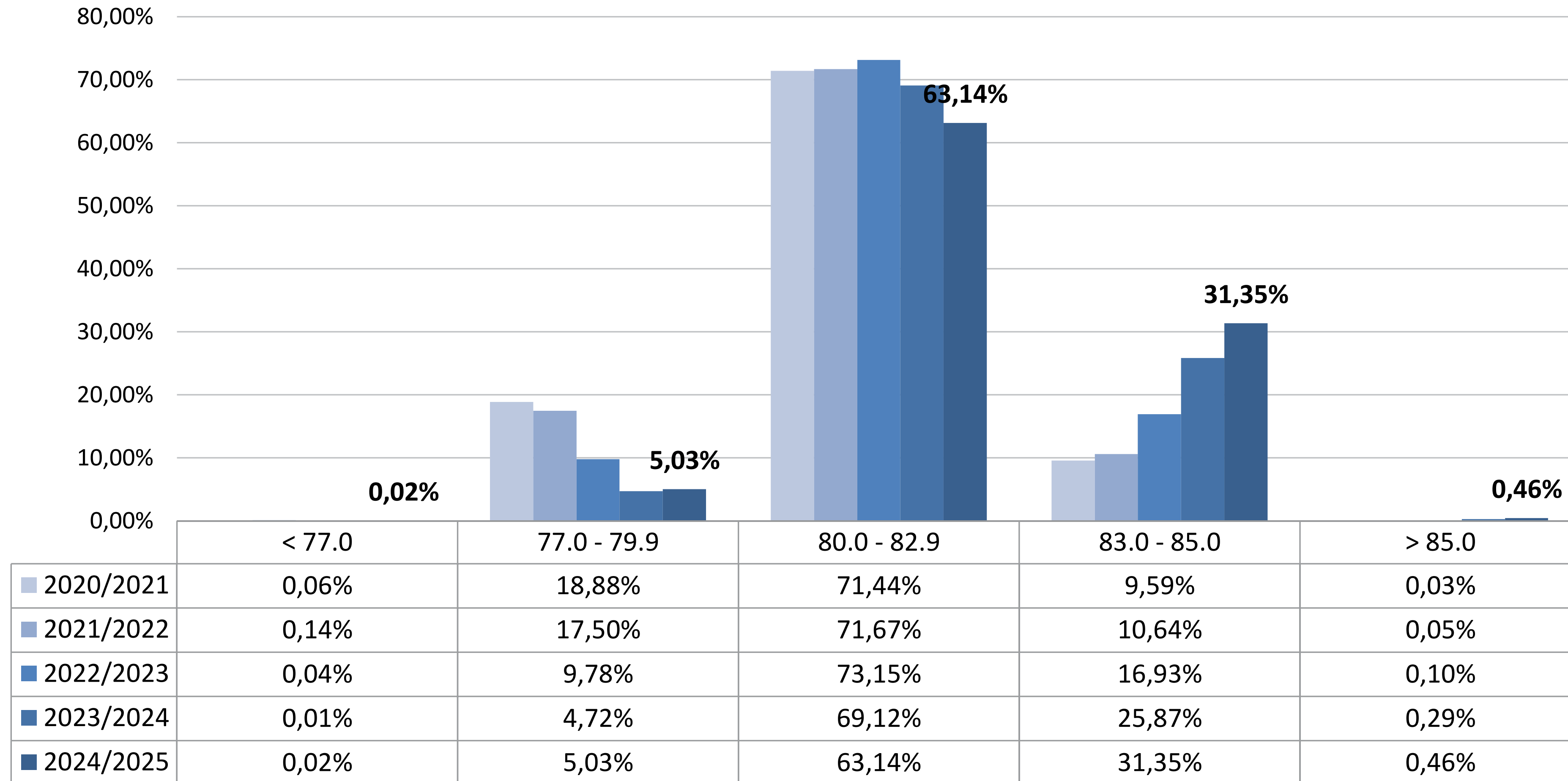
source: Brazilian HVI Laboratories, March 2026





# fiber uniformity - UI (%)

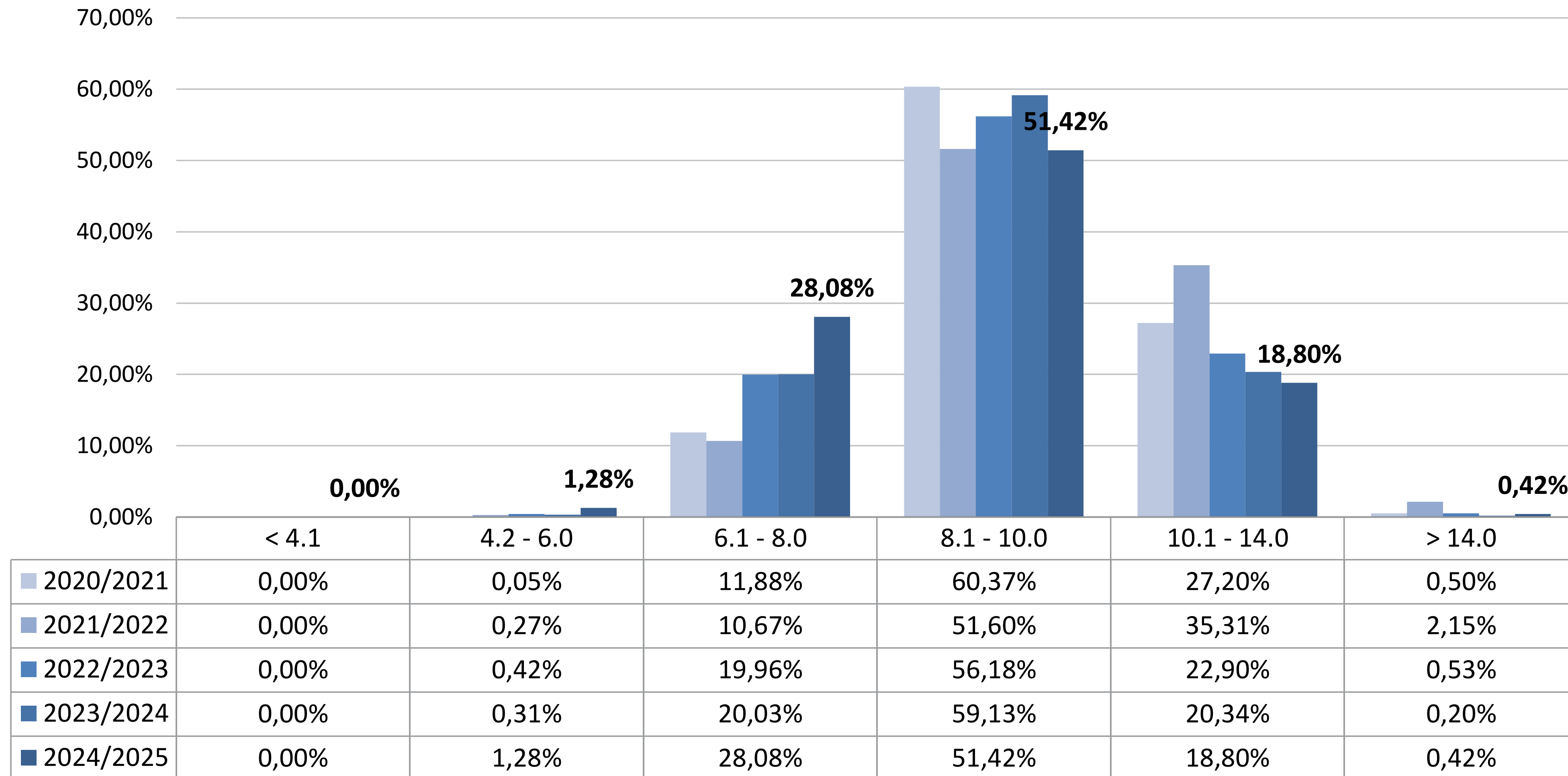
source: Brazilian HVI Laboratories, March 2026





# short fiber index (0,5 inch) - SFI (%)

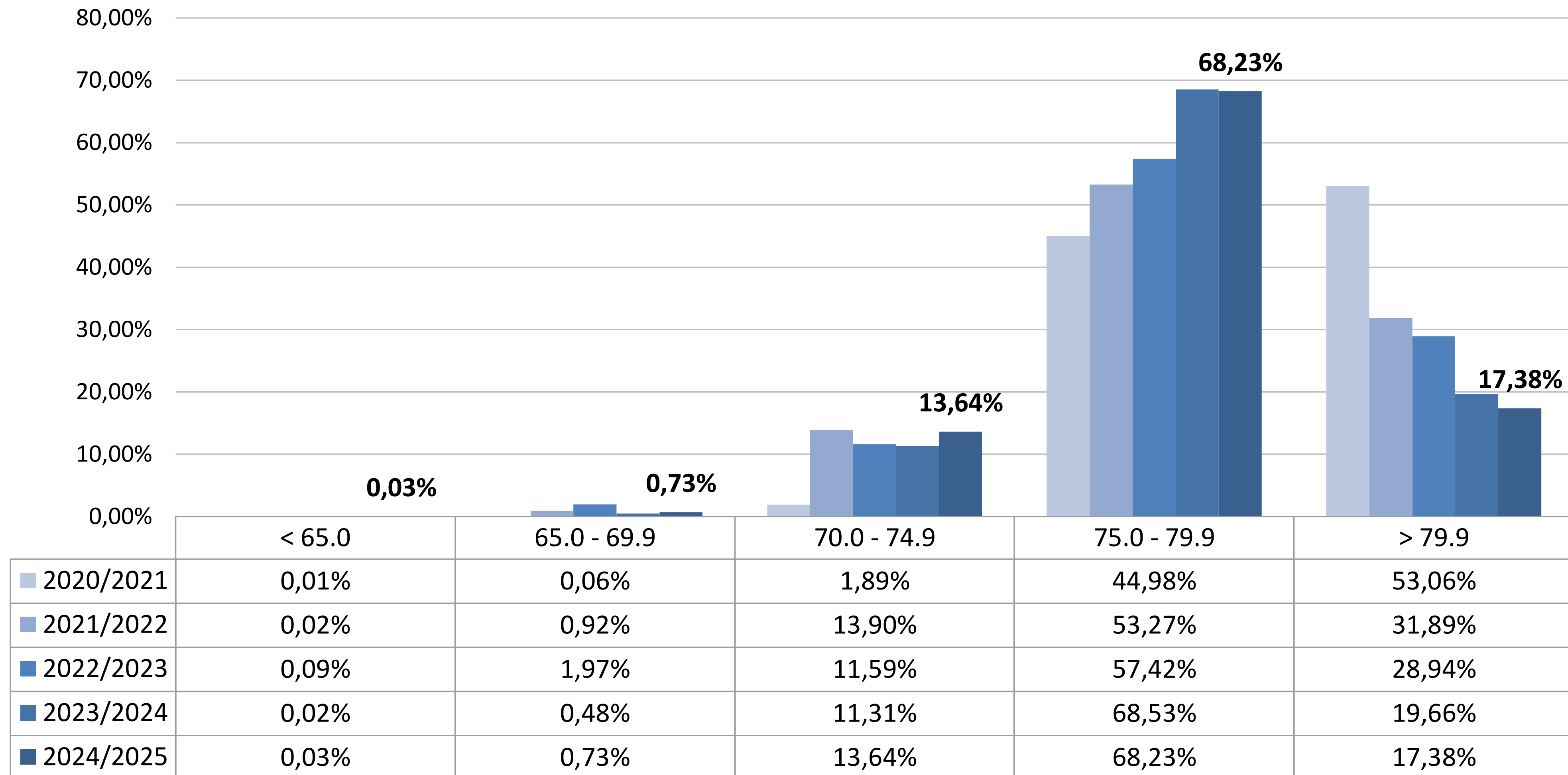
source: Brazilian HVI Laboratories, March 2026

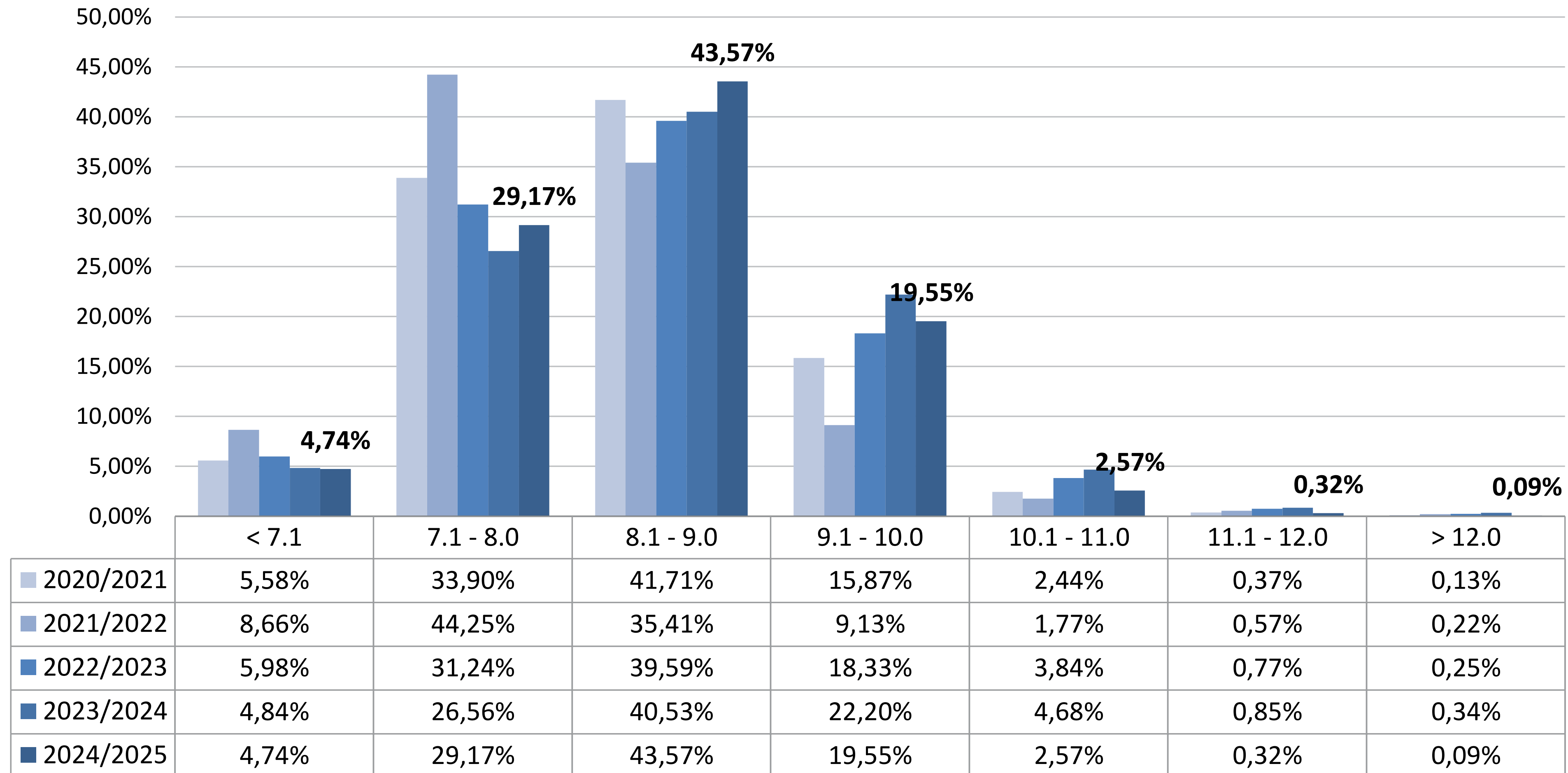




# reflectance - Rd

source: Brazilian HVI Laboratories, March 2026

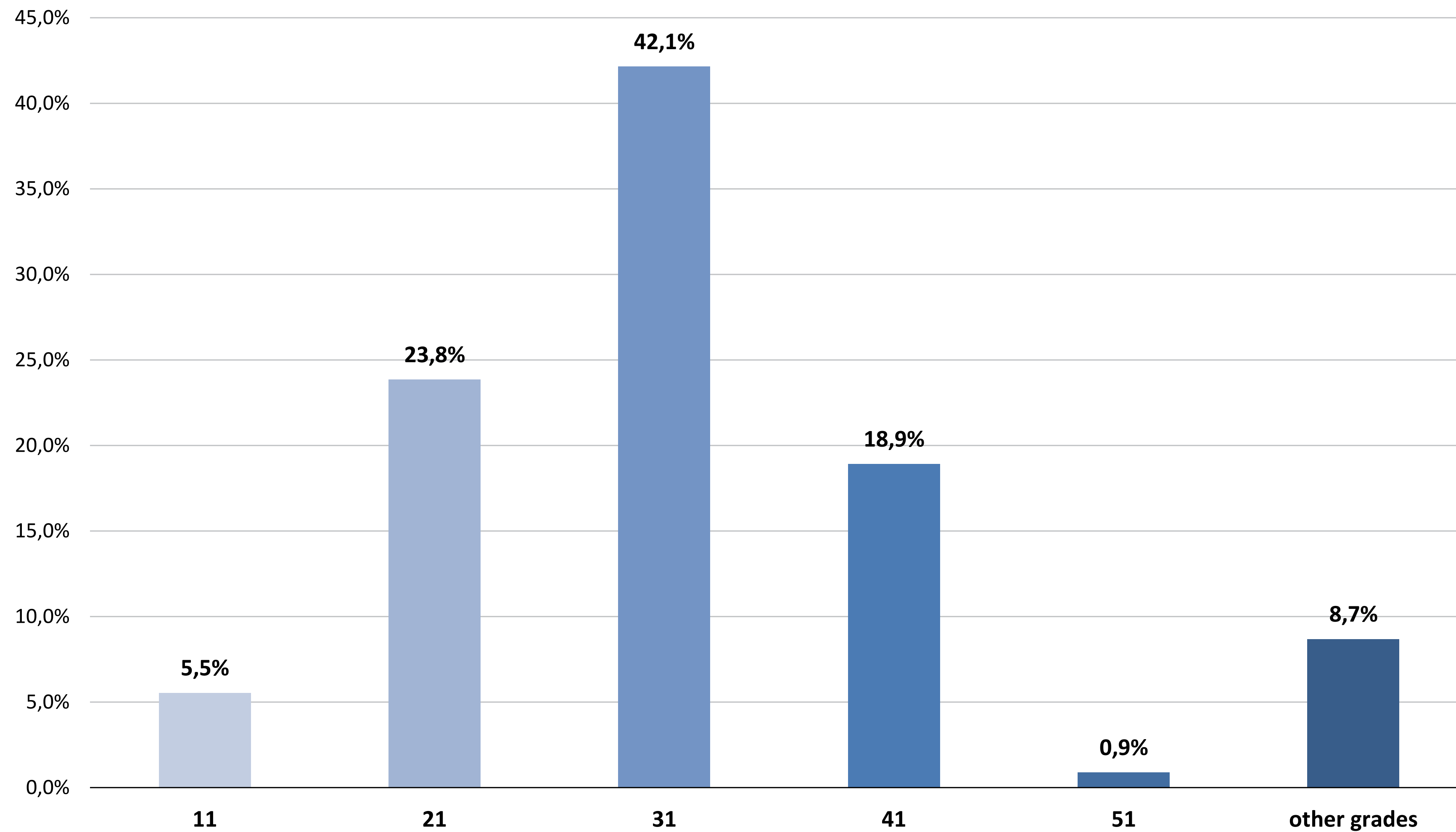






# color grade CG HVI

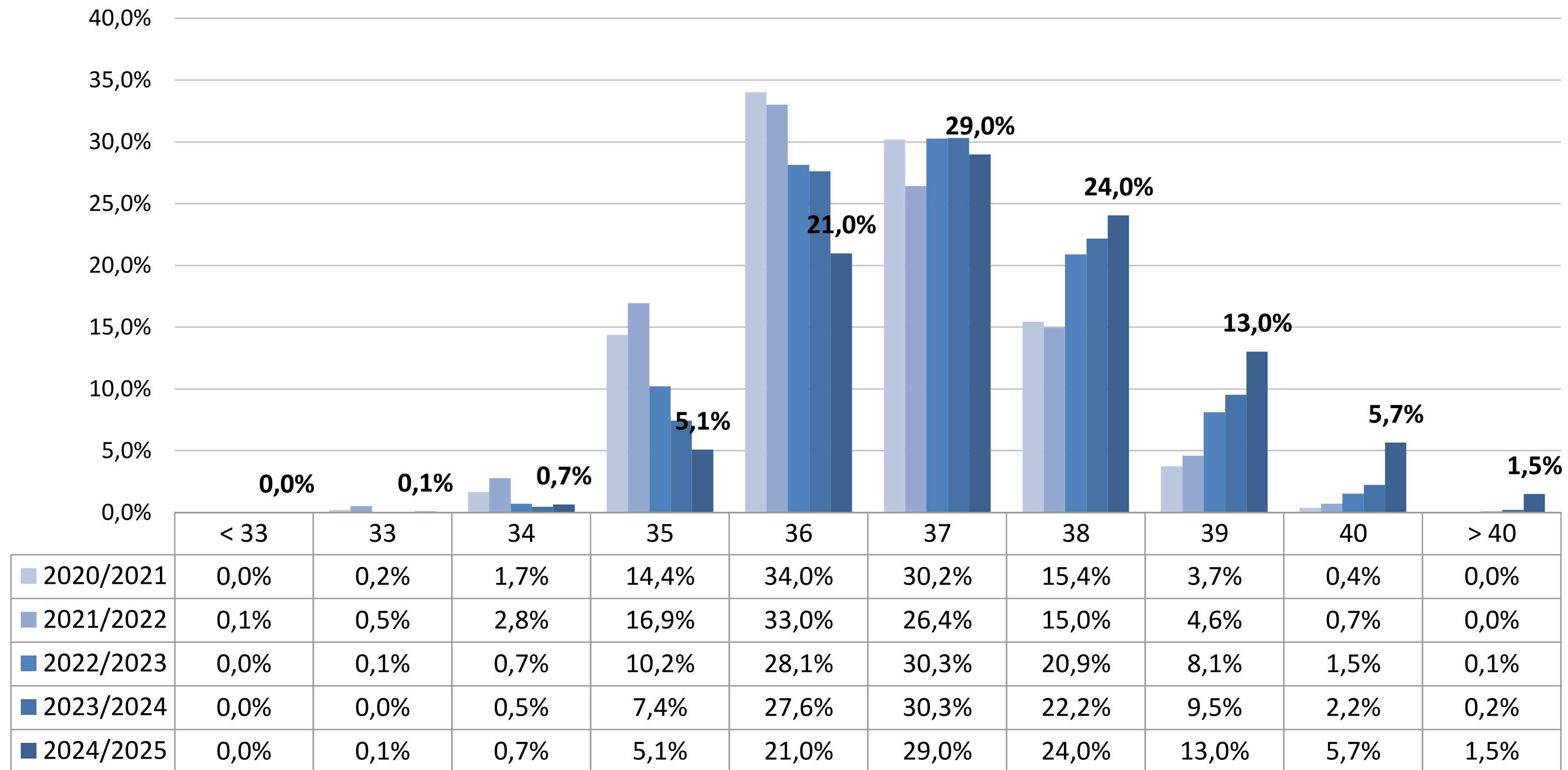
source: Brazilian HVI Laboratories, March 2026





# evolution of staple quality - UHML

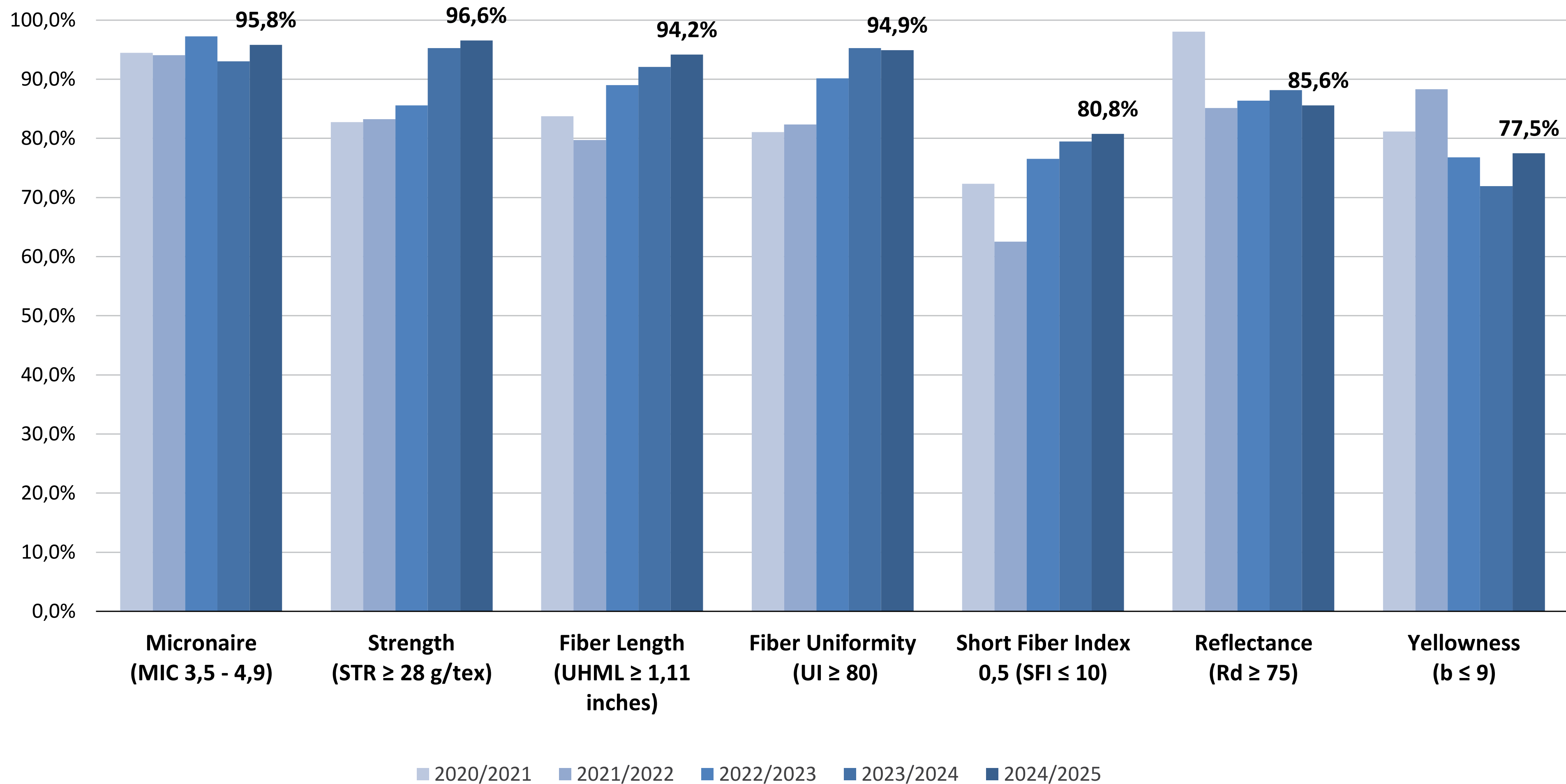
source: Brazilian HVI Laboratories, March 2026





# indicators 2024/2025 growing season

source: Brazilian HVI Laboratories, March 2026





for the **Brazilian cotton industry**, the present represents a commitment with

## quality

---



## traceability

---



## sustainability

---



## marketing

---



*supported by*



[cottonbrazil.com](http://cottonbrazil.com) | [f](#) [@](#) [▶](#) [in](#) **cottonbrazil**