



Cotton Brazil

growing for a better future

quality report

Updated in 28th February, 2026





HVI Labs in Brazil responsible for analysing 100% of Brazilian cotton production

classing labs

13

HVI machines

90

Central Quality Control Lab (CBRA)

1

Mato Grosso

classing labs: 9
HVI machines: 62

Mato Grosso do Sul

classing labs: 1
HVI machines: 4

Goiás

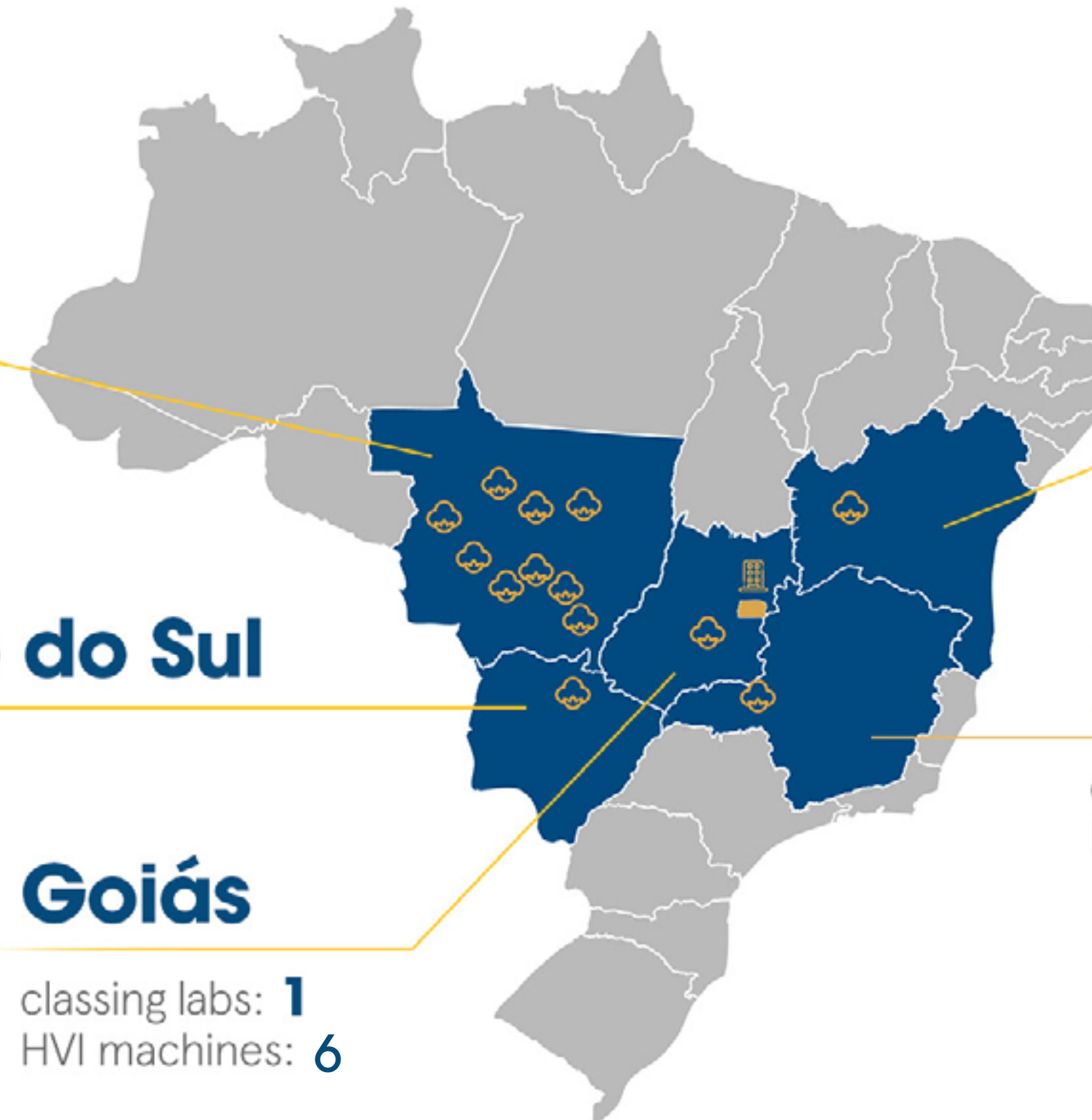
classing labs: 1
HVI machines: 6

Bahia

classing labs: 1
HVI machines: 16

Minas Gerais

classing labs: 1
HVI machines: 2





SBRHVI Program participant labs



Luís Eduardo Magalhães / BA



Goiânia / GO



Pedra Preta / MT



Sinop / MT



Chapadão do Sul / MS



Campo Verde / MT



Uberlândia / MG



Primavera do Leste / MT



Empresa do Grupo
Bureau Veritas

Lucas do Rio Verde, Sapezal, Rondonópolis,
Campo Novo do Parecis / MT



BUREAU
VERITAS



Empresa do Grupo
Bureau Veritas



BUREAU
VERITAS

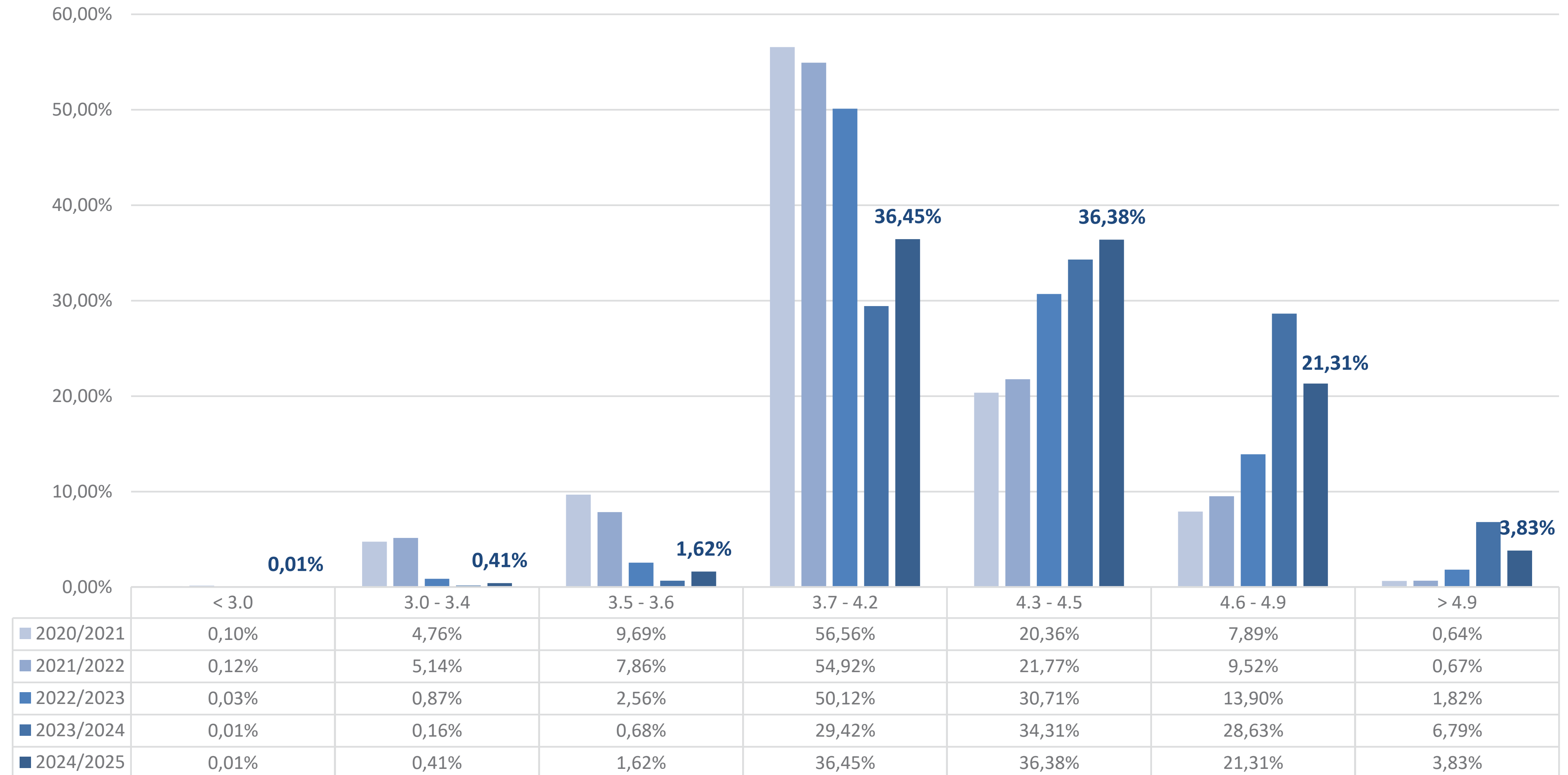
Sorriso / MT





micronaire - MIC

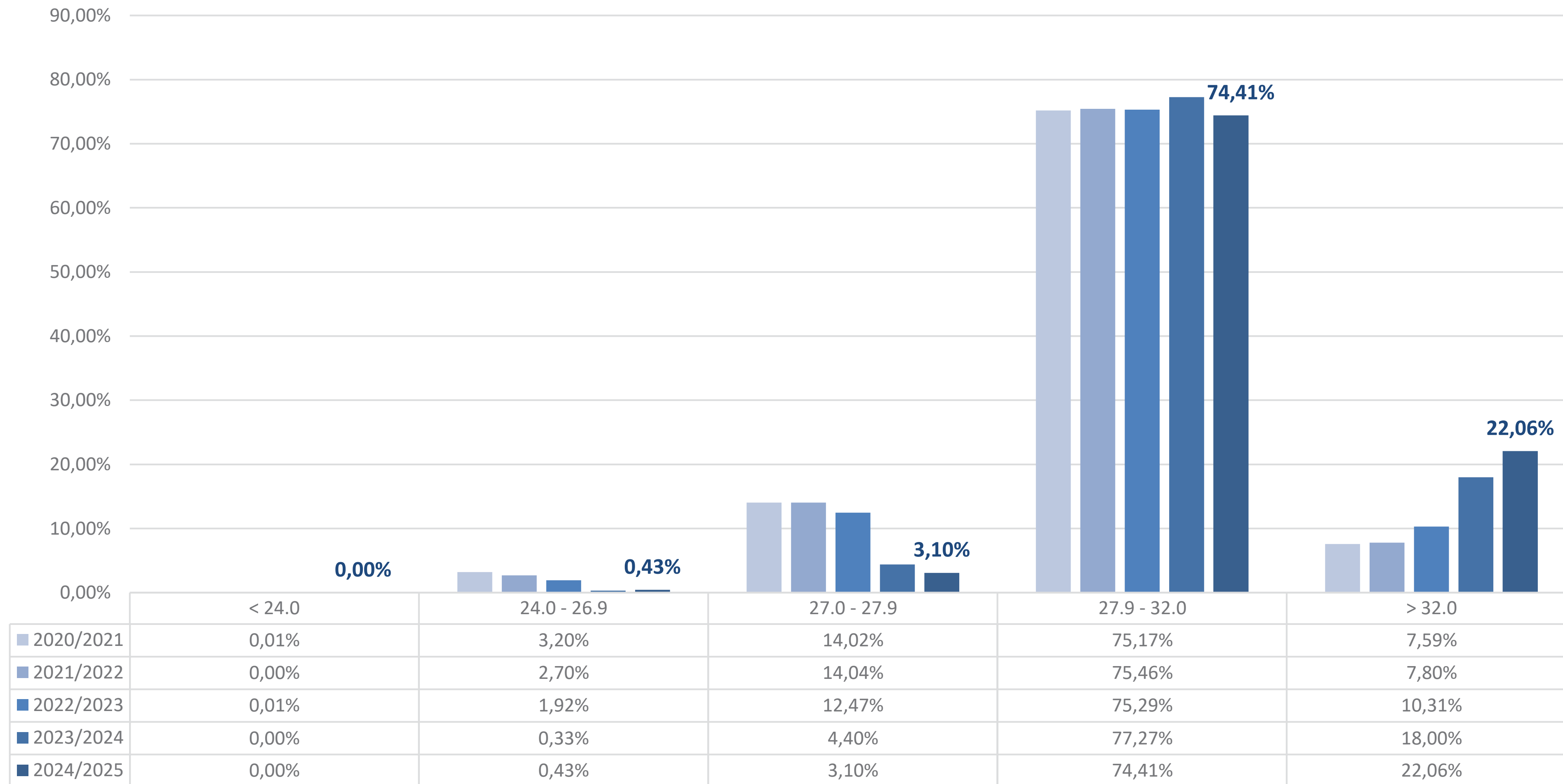
source: Brazilian HVI Laboratories, February 2026





strength - STR (gf/tex)

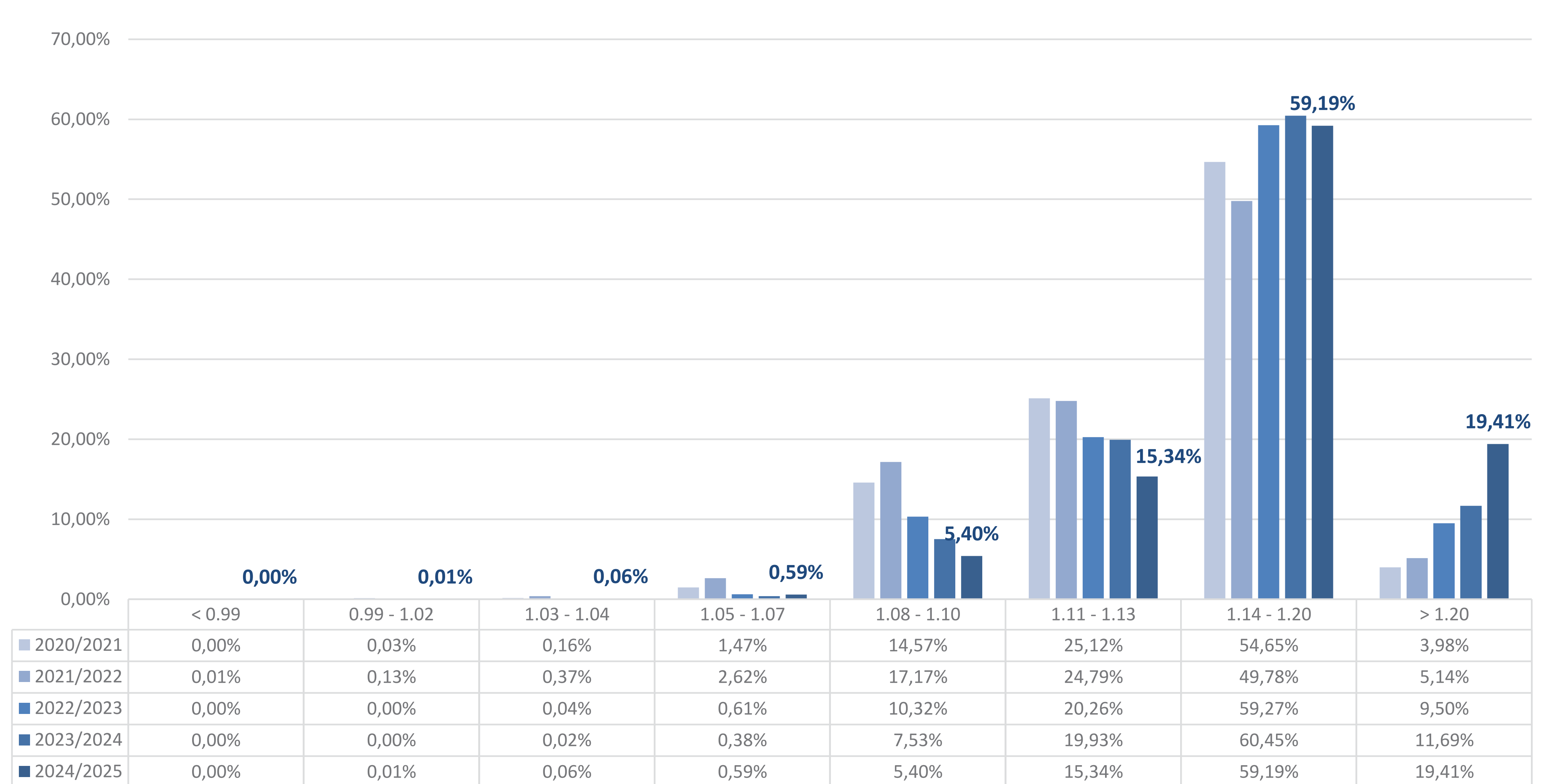
source: Brazilian HVI Laboratories, February 2026





fiber length - UHML (inches)

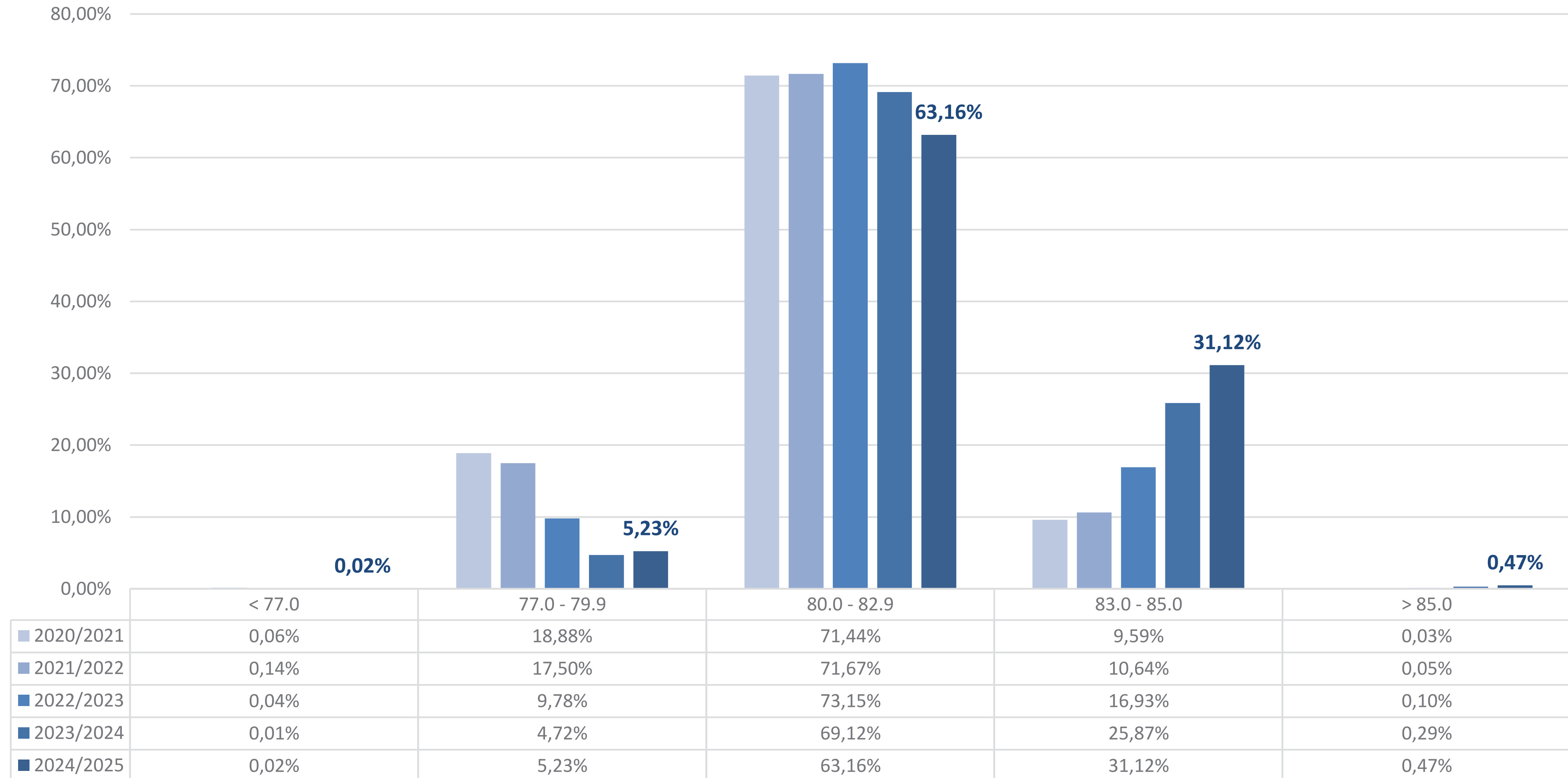
source: Brazilian HVI Laboratories, February 2026





fiber uniformity - UI (%)

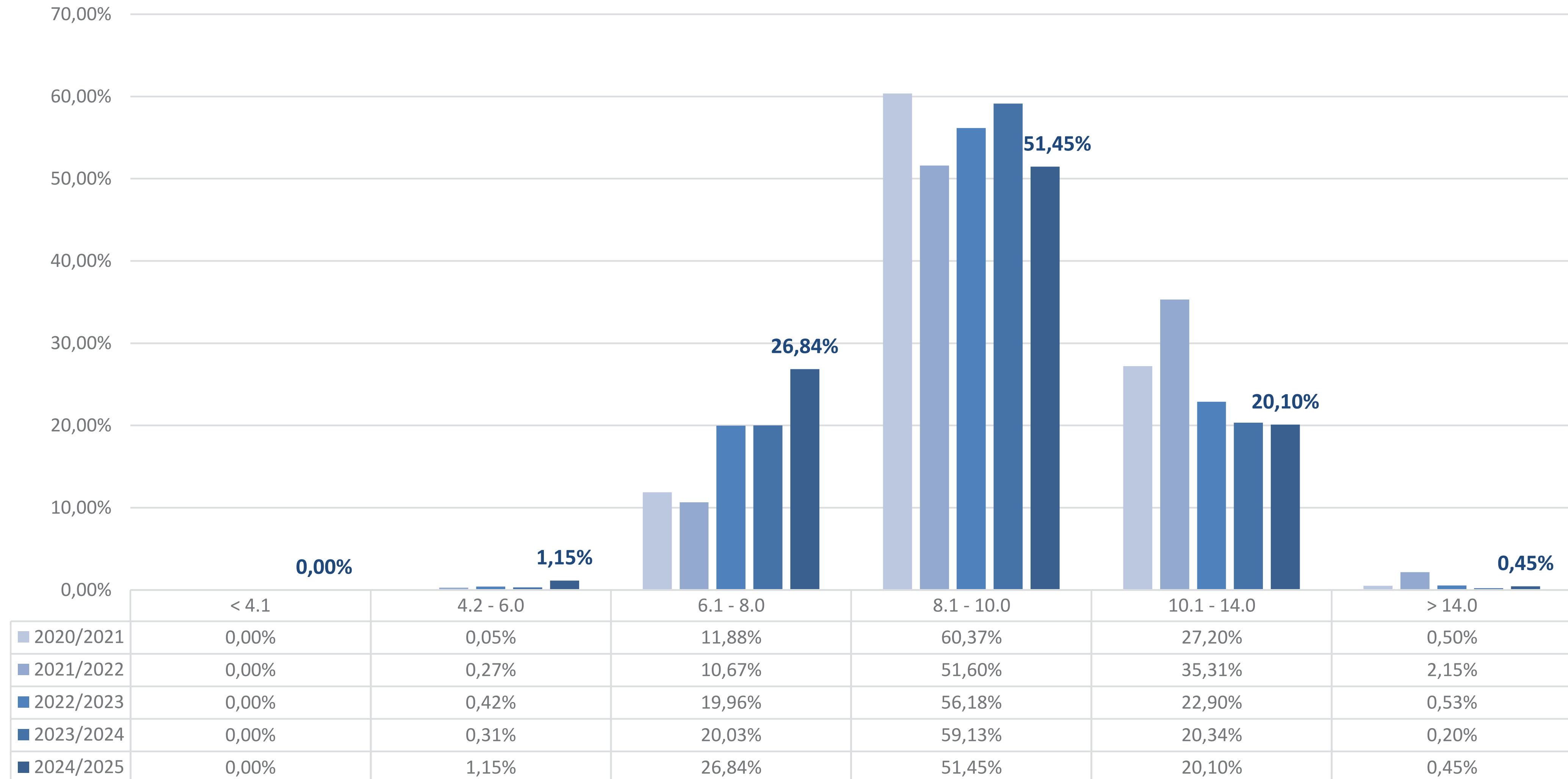
source: Brazilian HVI Laboratories, February 2026





short fiber index (0,5 inch) - SFI (%)

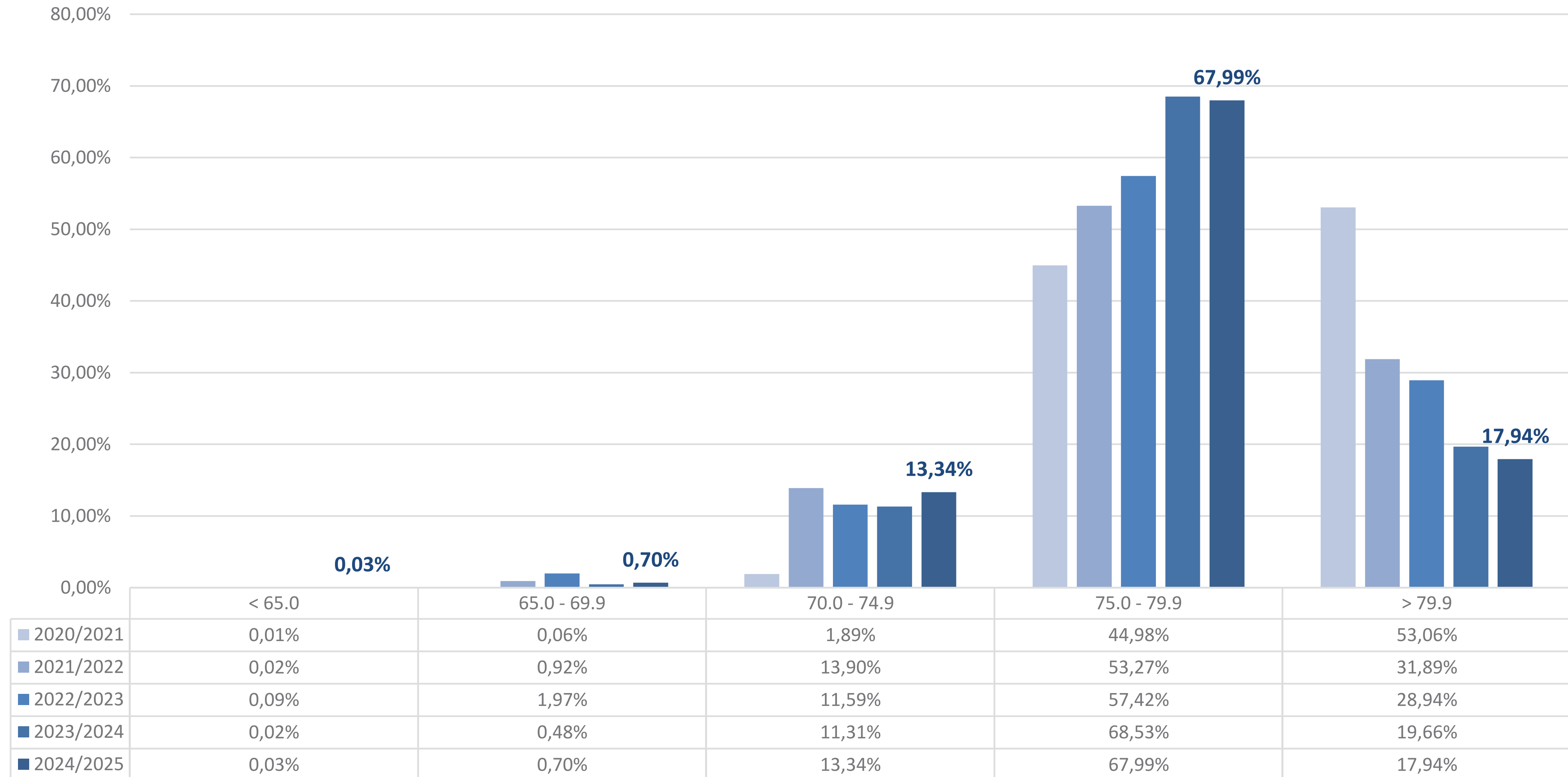
source: Brazilian HVI Laboratories, February 2026

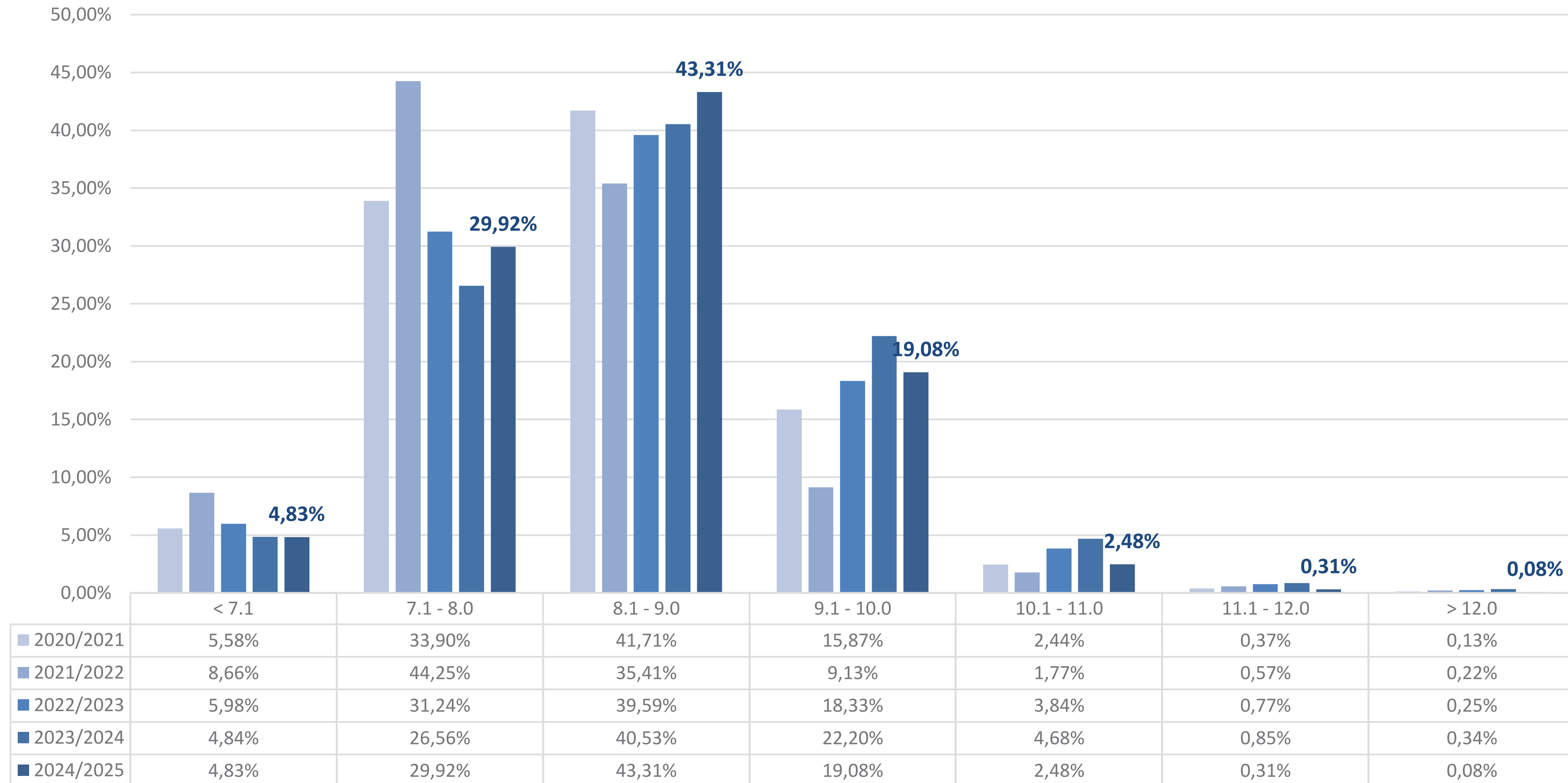




reflectance - Rd

source: Brazilian HVI Laboratories, February 2026

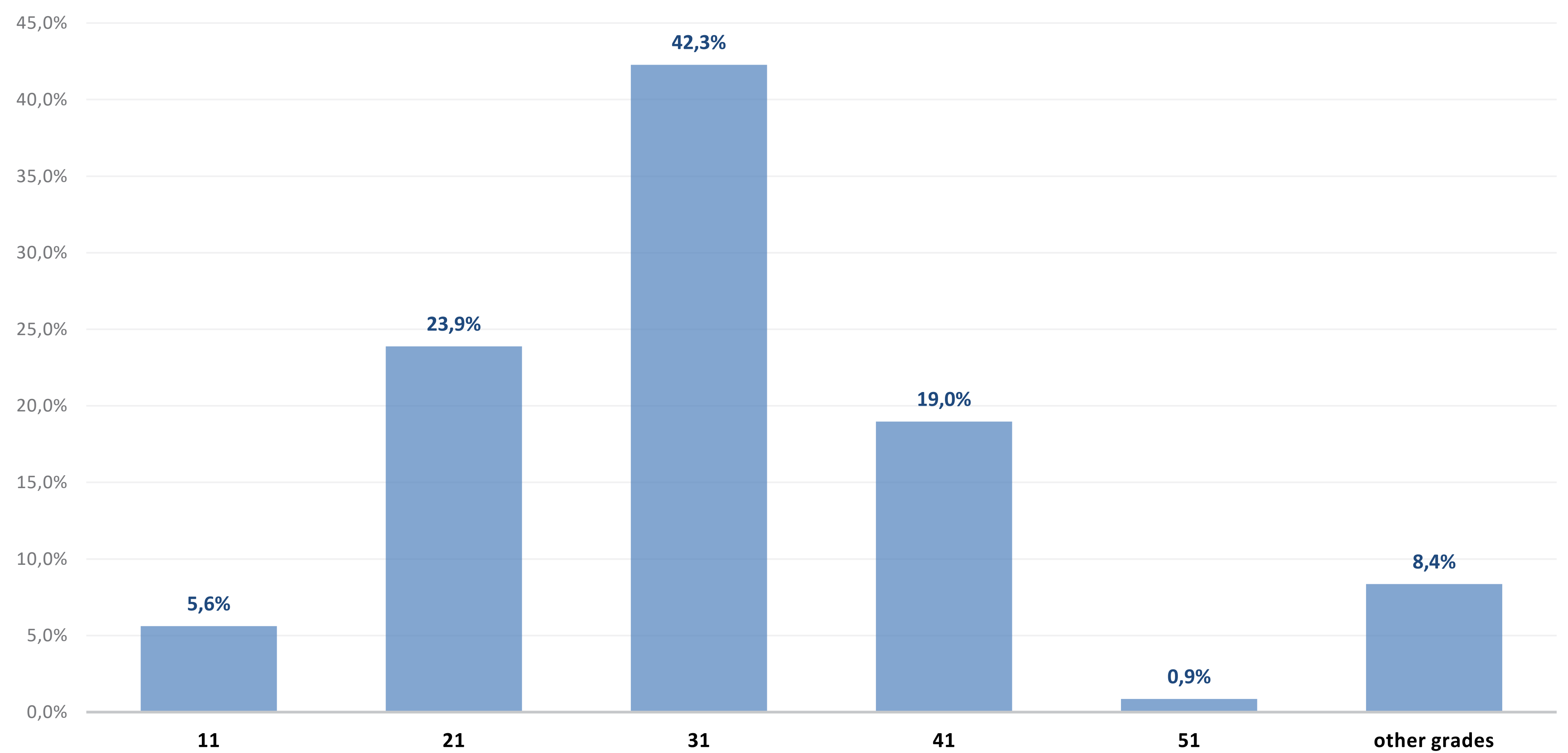






color grade CG HVI

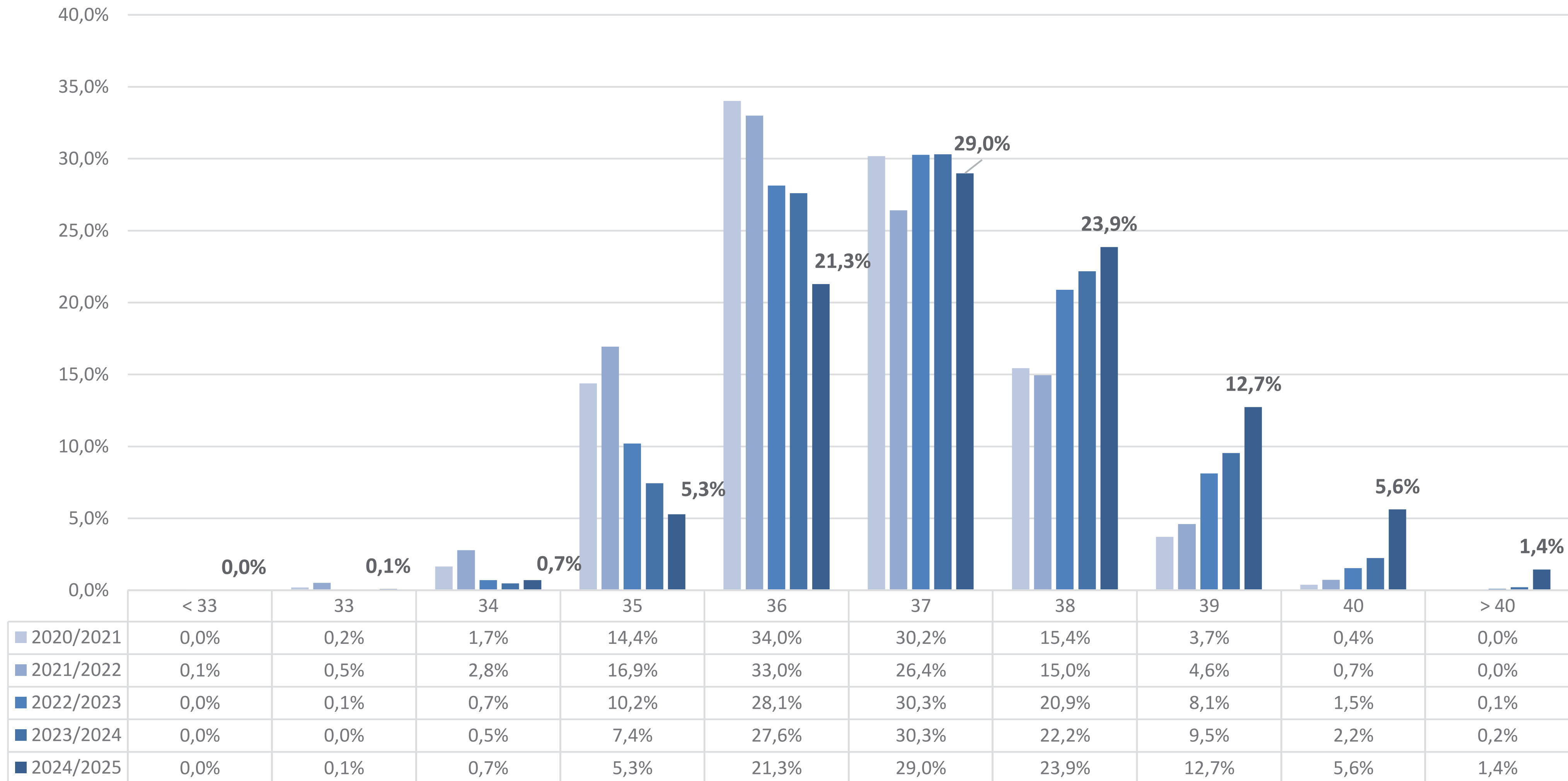
source: Brazilian HVI Laboratories, February 2026





evolution of staple quality - UHML

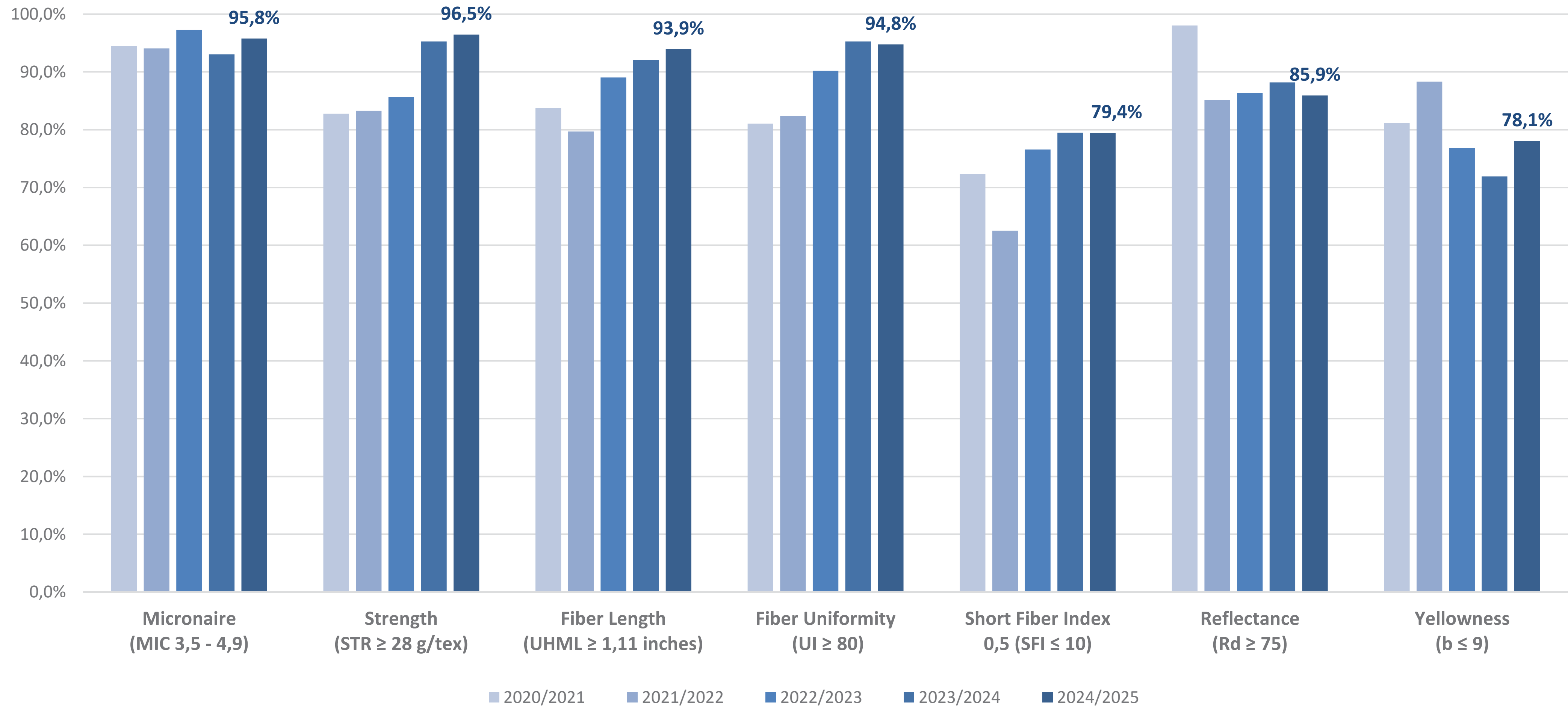
source: Brazilian HVI Laboratories, February 2026





indicators 2024/2025 growing season

source: Brazilian HVI Laboratories, February 2026





for the **Brazilian cotton industry**, the present represents a commitment with

quality



traceability



sustainability



marketing



supported by



cottonbrazil.com | [f](#) [@](#) [▶](#) [in](#) **cottonbrazil**